

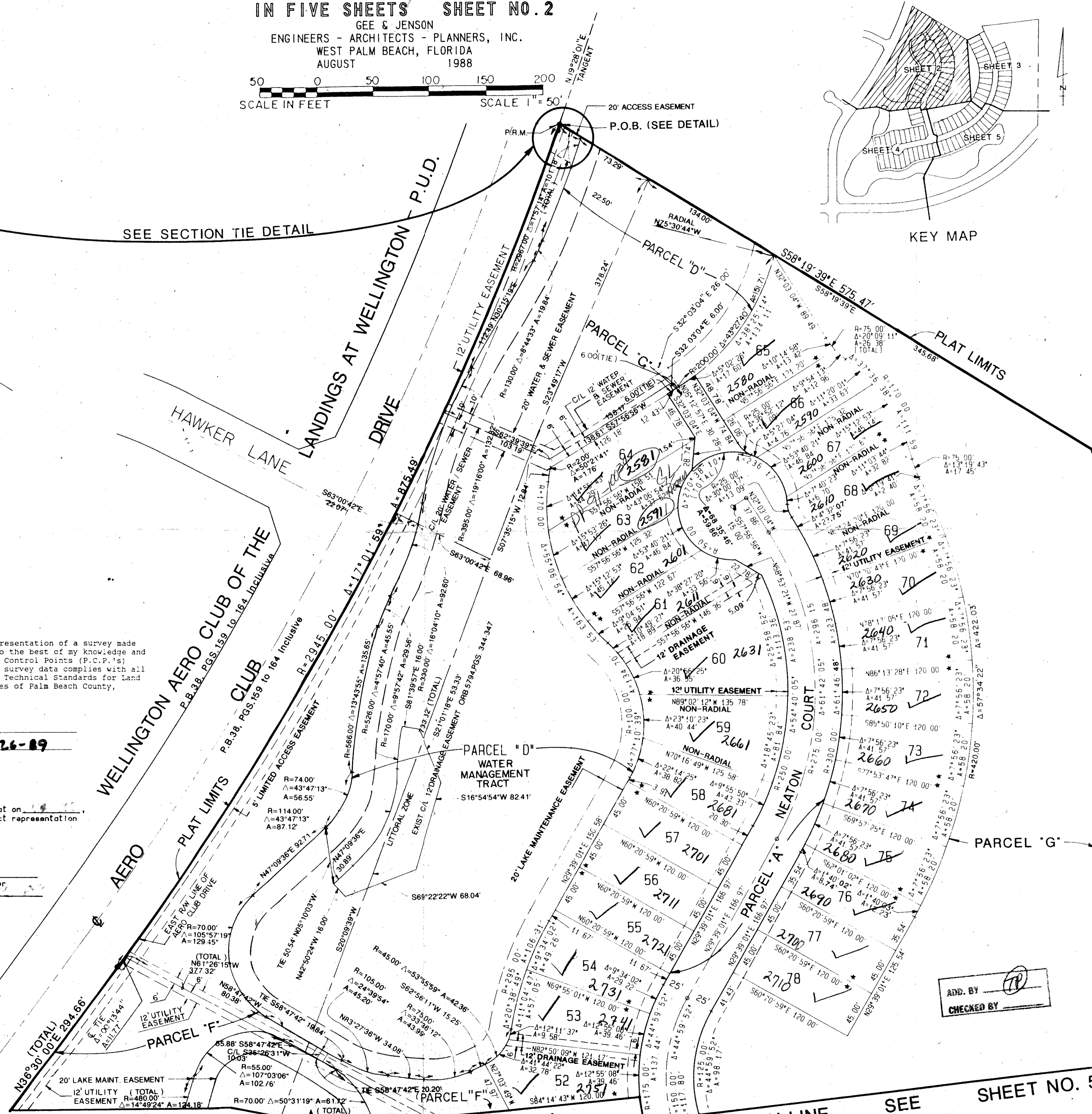
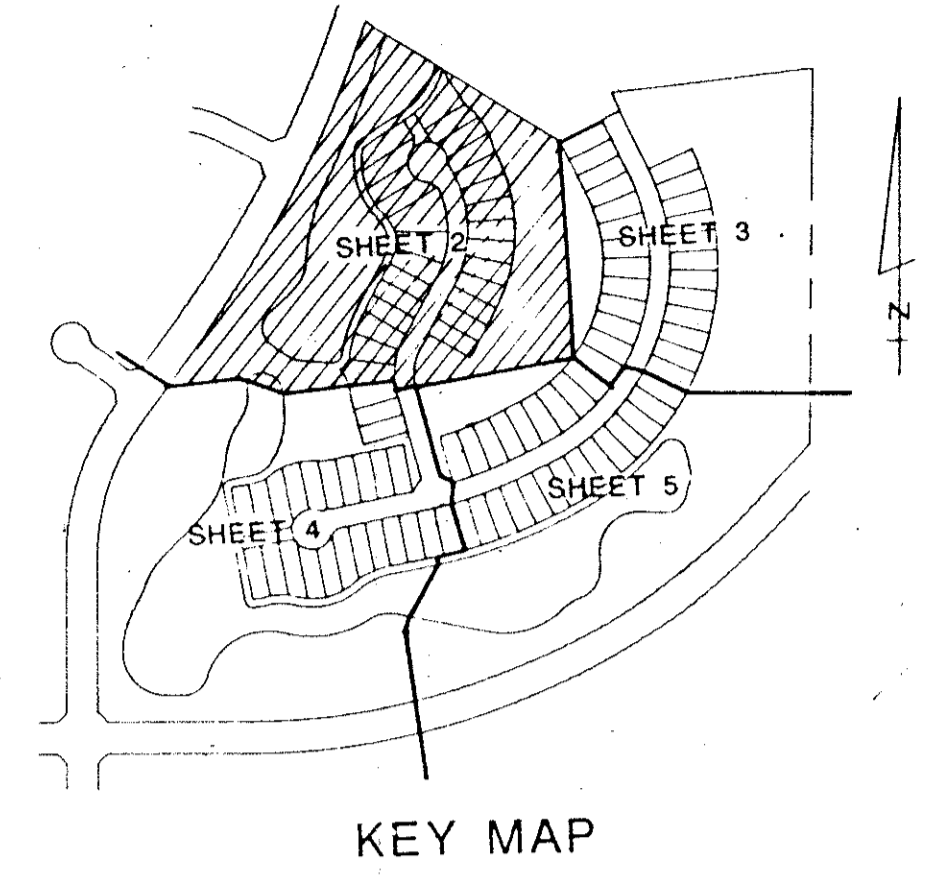
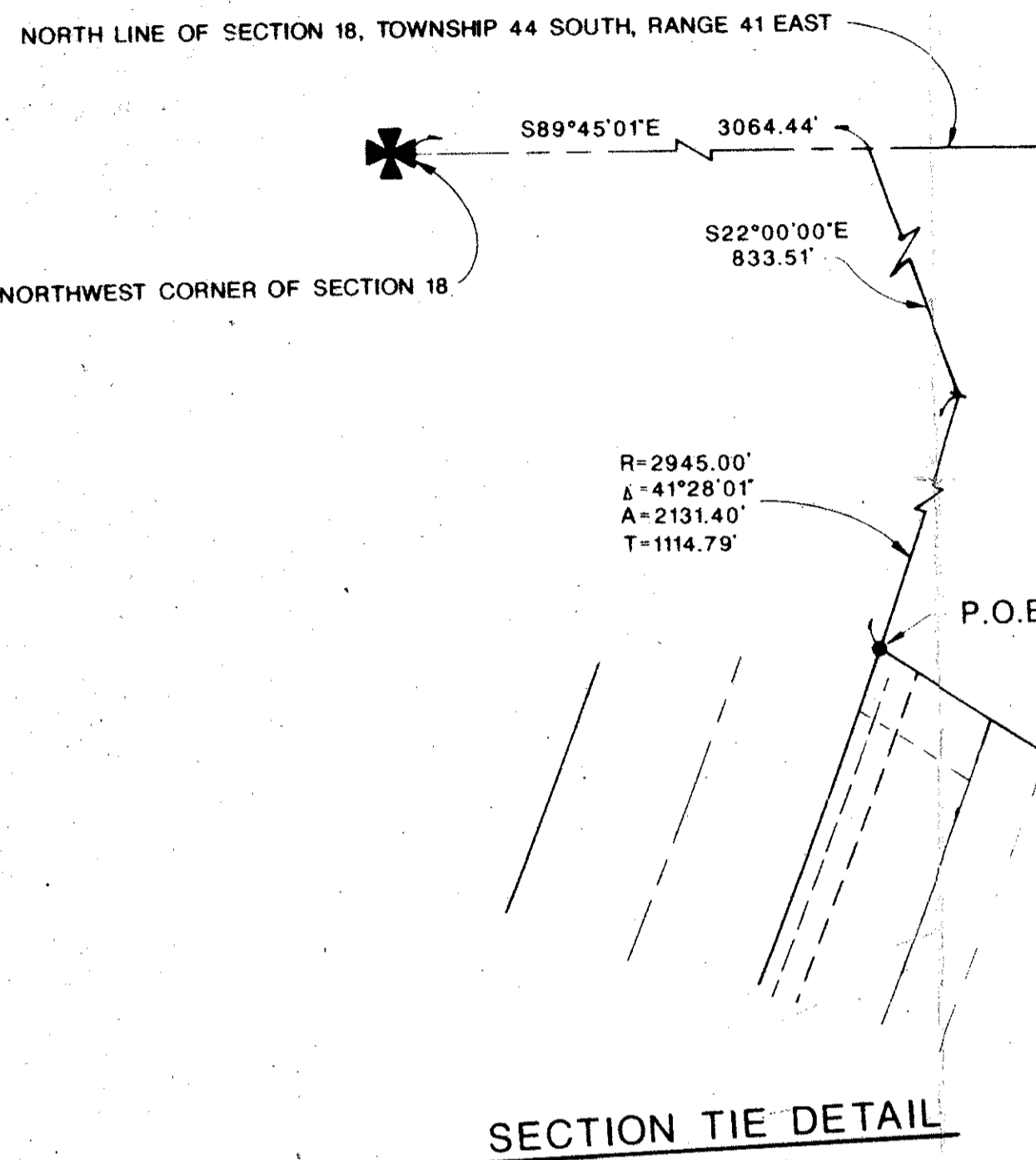
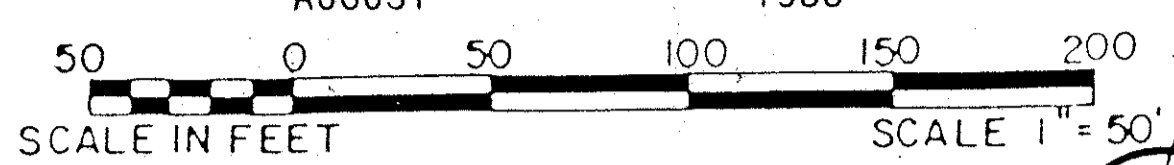
# LAKEFIELD OF THE LANDINGS AT WELLINGTON P.U.D. - PLAT 2B

IN PART OF SECTION 18, TOWNSHIP 44 SOUTH, RANGE 41 EAST  
 PALM BEACH COUNTY, FLORIDA  
 IN FIVE SHEETS SHEET NO. 2

GEE & JENSON  
 ENGINEERS - ARCHITECTS - PLANNERS, INC.  
 WEST PALM BEACH, FLORIDA  
 AUGUST 1988

# 28

STATE OF FLORIDA  
 COUNTY OF PALM BEACH  
 This plat was filed for  
 record at \_\_\_\_\_ M. this \_\_\_\_\_ day  
 of \_\_\_\_\_ 1988, and duly  
 recorded in Plat Book No. \_\_\_\_\_  
 on Pages \_\_\_\_\_ thru \_\_\_\_\_  
 JOHN B. DUNKLE  
 Clerk Circuit Court  
 By: \_\_\_\_\_ D.C.



### SURVEYOR'S CERTIFICATION

STATE OF FLORIDA  
 COUNTY OF PALM BEACH  
 This is to certify that the plat shown hereon is a true and correct representation of a survey made under my responsible direction and supervision and that said survey is accurate to the best of my knowledge and belief and that Permanent Reference Monuments (P.R.M.'s) have been set and Permanent Control Points (P.C.P.'s) will be set as required by law for the required improvements and further that the survey data complies with all the requirements of Part 1, Chapter 177, Florida Statutes, as Amended and Minimum Technical Standards for Land Surveying in the State of Florida of the Florida Administrative Code and Ordinances of Palm Beach County, Florida.

DAILEY-FOTORNY, INC.

Paul J. Fotorny, Professional Land Surveyor  
 Florida Registration No. 2297. Date: 8-26-89

### SURVEYOR'S CERTIFICATION

STATE OF FLORIDA  
 COUNTY OF PALM BEACH  
 KNOW ALL MEN BY THESE PRESENTS, that the undersigned does hereby certify that on \_\_\_\_\_ 1989, the hereon plat was prepared and delineated under my supervision and is a correct representation of the lands described as surveyed by DAILEY - FOTORNY, INC.

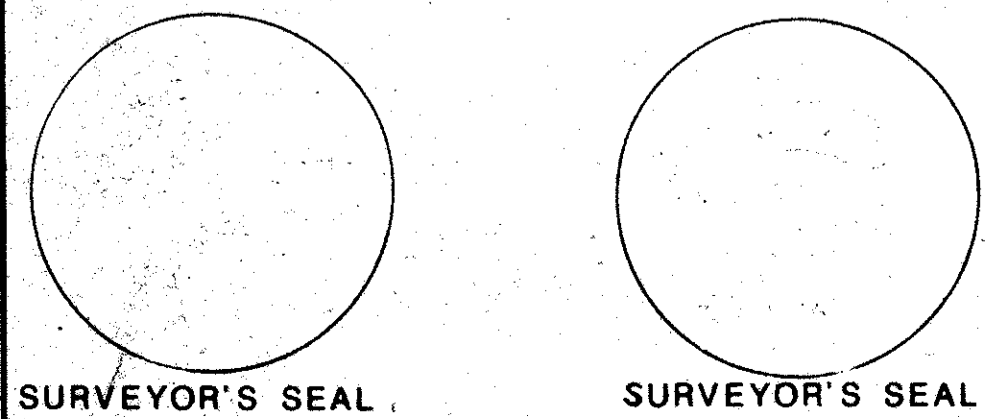
GEE & JENSON - Engineers, Architects, Planners, Inc.

John H. Dillingham, Professional Land Surveyor  
 Florida Registration No. 4141. Date: \_\_\_\_\_

Subdivision of the Land Company  
 10000  
 PLAT 2B  
 REF 78-287  
 335114  
 77  
 728

THIS INSTRUMENT PREPARED  
 BY JOHN H. DILLINGHAM  
 One Harvard Circle  
 West Palm Beach, Florida

COMPUTED DWL/CAO  
 DRAWN DWL/CAO  
 CHECKED JLD  
 APPROVED JLD



SHEET NO. 3  
 SEE  
 MATCH LINE

ADD. BY   
 CHECKED BY

0269-005  
 Pet. 78-287

**63/28**

\* = INDICATES ZERO LOT LINE

LAKEFIELD OF THE LANDINGS AT WELLINGTON - PLAT 2B